

Ladies Long Sleeve Easy Care Shirt L608



This comfortable wash-and-wear shirt is indispensable for the workday. Wrinkle resistance makes this shirt a cut above the competition so you and your staff can be, too.

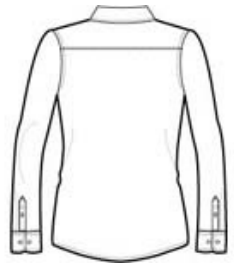
- 4.5-ounce, 55/45 cotton/poly
- Traditional, relaxed look
- Open collar
- Dyed-to-match buttons
- Adjustable cuffs
- Classic Navy and Light Stone have contrast inside neckband only.

CARE INSTRUCTIONS

Machine wash warm with like colors . Only non-chlorine bleach when needed. Tumble dry low. Warm iron if necessary.

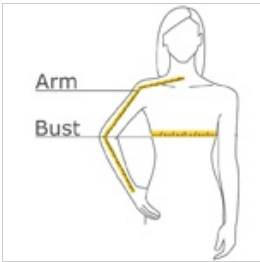


front



back

HOW TO MEASURE



BUST

With arms down at sides, measure around the upper body, under arms and around the fullest part of the bust.

ARM

Place hand on hip. Start at the center of the back of the neck and measure across the shoulder, to the elbow, and then down to the wrist.

SIZE CHART

	XS	S	M	L	XL	XXL	3XL	4XL	5XL	6XL
Size	2	4/6	8/10	12/14	16/18	20/22	24/26	28/30	32/34	36/38
Bust	32-34	35-36	37-38	39-41	42-44	45-47	48-51	52-55	56-59	60-63
Arm	30 - 30 3/4	30 3/4 - 31 1/2	31 1/2 - 32	32 - 32 1/2	32 1/2 - 33	33 - 33 3/8	33 3/8 - 33 3/4	33 3/4 - 34 1/2	34 1/4 - 34 3/4	34 1/2 - 35

COLOR INFORMATION

Athletic Gold/Light Bark Stone PMS 137 C		Black/ Light Stone PMS NTR Black C	Bright Lavender	Burgundy/Light Stone PMS 505 C	Classic Navy/Light Stone PMS 426 C	Cover Green PMS NO MATCH	Coffee Bean/Light Stone PMS 7617 C	Court Green PMS 7724 C	Dark Green/Navy PMS 5467 C	Deep Berry
Hibiscus PMS 710 C	Light Blue/Light Stone PMS 644 C	Light Pink PMS 489 C	Light Stone/Classic Navy* PMS 454 C	Maui Blue PMS 7709 C	Mediterranean Blue PMS 7673 C	Navy/Light Stone PMS 533 C	Purple/Light Stone PMS 669 C	Red/Light Stone PMS 193 C	Royal/ Classic Navy PMS 7687 C	Steel Grey/Light Stone PMS 11 C
Stone PMS 467 C	Strong Blue PMS 7462 C	Teal Green PMS 7715 C	Texas Orange/Light Stone PMS 7583 C	Tropical Pink PMS 7424 C	Ultramarine Blue PMS 7682 C	White/ Light Stone* PMS NO MATCH	Yellow PMS 1345 C			