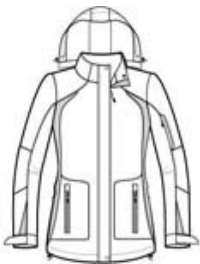


Ladies All-Season II Jacket L304

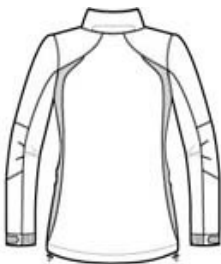


Our All-Season II Jacket has colorblock panels at the sides and sleeves to give it year-round appeal.

- 100% Taslan nylon shell
- 100% microfleece body lining
- 100% polyester sleeve lining for easy on/off
- 3000MM fabric waterproof rating
- Critically seam-sealed for added waterproof protection
- 3000G/M² fabric breathability rating
- Gently contoured silhouette
- Zip-off hood with drawcord and toggles
- Storm flap with hook and loop closure
- Two-way zipper with zipper garage
- Interior cell phone pocket
- Interior zippered pocket
- Articulated elbows for greater mobility
- Left sleeve zippered pocket
- Port Pocket™ for easy embroidery access
- Adjustable self-fabric tab cuffs with hook and loop closures
- Front zippered pockets
- Drop tail hem with drawcord and toggles for adjustability

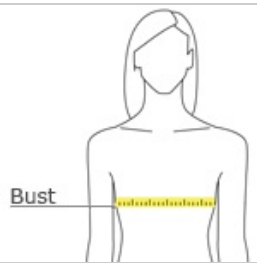


front



back

HOW TO MEASURE



BUST
With arms down at sides, measure around the upper body, under arms and around the fullest part of the bust.

SIZE CHART

	XS	S	M	L	XL	XXL	3XL	4XL
Size	2	4/6	8/10	12/14	16/18	20/22	24/26	28/30
Bust	32-34	35-36	37-38	39-41	42-44	45-47	48-51	52-55

COLOR INFORMATION



Black/Black
PMS 426 C



Snorkel
Blue/Black
PMS 7462 C



True Navy/Iron
Grey
PMS 276 C



True Red/Black
PMS 200 C



White/Black
PMS NO MATCH